

Rotherham Children and Young People's Services

Assessment of Performance by Every Child Matters Outcome

2009/10 Quarter Two Report

This report outlines performance at the end of 2009/10 Quarter Two against targets, with comparisons against previous performance and where possible statistical neighbour and national data.

It should be read in conjunction with the 'CYPS Performance Monitoring Table – Quarter Two 2009/10' (Appendix B) as it includes references throughout the text to the numbering structure within the table.

Please note the following data health warnings;

- The number of indicators which can be reported quarterly is very small for each outcome. This needs to be considered when reviewing any analysis by percentages.
- Comparative data relates to the latest available data and therefore date periods for some indicators may vary. It has been sourced via the DCSF Local Area Interactive Tool (downloaded 19th October 2009).

[Data date: 30th September 2009 (unless otherwise stated)]

Performance Summary – All themes

Number of Indicators:

21

Number of Components:

25

Performance against Targets

(Comparing this quarter's performance against set targets)

On Target	Interpretation	Being Healthy		Staying Safe		Enjoying & Achieving		Making a Positive Contribution		Achieving Economic Wellbeing		Non ECM Indicators		All Themes	
		No	%	No	%	No	%	No	%	No	%	No	%	No	%
✓	Has met target	2	67%	5	50%	5	83%	0	0%	1	33%	0	0%	13	52.0%
✗	Has not met target	1	33%	3	30%	1	17%	1	50%	2	67%	1	100%	9	36.0%
- / n/a	No targets set (ie new and/or baseline yr)	0	0%	2	20%	0	0%	1	50%	0	0%	0	0%	3	12.0%
Total Number of Components		3		10		6		2		3		1		25	

Direction of Travel (DOT)

(Comparing this quarter performance to previous)

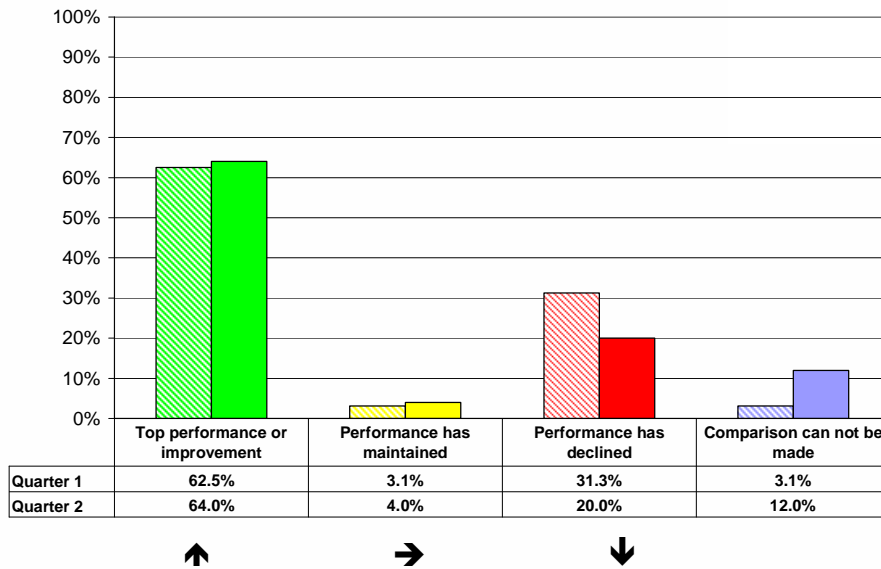
Outturn DOT	Interpretation	Being Healthy		Staying Safe		Enjoying & Achieving		Making a Positive Contribution		Achieving Economic Wellbeing		Non ECM Indicators		All Themes	
		No	%	No	%	No	%	No	%	No	%	No	%	No	%
↑	Top performance or improvement	3	100%	7	70%	4	67%	1	50%	1	33%	0	0%	16	64%
→	Performance has maintained	0	0%	0	0%	1	17%	0	0%	0	0%	0	0%	1	4%
↓	Performance has declined	0	0%	1	10%	1	17%	0	0%	2	67%	1	100%	5	20%
- / n/a	Comparison can not be made (ie new)	0	0%	2	20%	0	0%	1	50%	0	0%	0	0%	3	12%
Total Number of Components		3		10		6		2		3		1		25	

Year to Date Performance

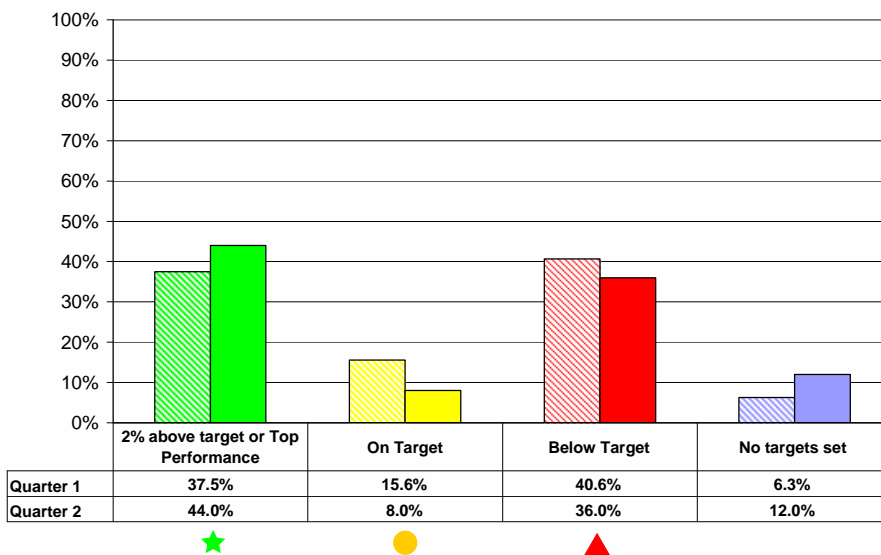
(Judged by corporate monitoring system Performance Plus)

Outturn Perf.	Interpretation	Being Healthy		Staying Safe		Enjoying & Achieving		Making a Positive Contribution		Achieving Economic Wellbeing		Non ECM Indicators		All Themes	
		No	%	No	%	No	%	No	%	No	%	No	%	No	%
★	2% above target or Top Performance	0	0%	5	50%	5	83%	0	0%	1	33%	0	0%	11	44%
●	On Target	2	67%	0	0%	0	0%	0	0%	0	0%	0	0%	2	8%
▲	Below Target	1	33%	3	30%	1	17%	1	50%	2	67%	1	100%	9	36%
- / n/a	No targets set (ie new and/or baseline year)	0	0%	2	20%	0	0%	1	50%	0	0%	0	0%	3	12%
Total Number of Components		3		10		6		2		3		1		25	

**Progress Over Quarters 2009-10
Direction of Travel - All Themes**



**Progress Over Quarters 2009-10
Performance Year to Date - All Themes**



Notes on overall performance

- Across all themes there is a positive direction of travel with 64.0% of indicators improving or maintaining top performance since 2009/10 Quarter One.
- There are still too many indicators not meeting targets (36.0%) although this does show an improvement on the 40.6% not meeting targets in 2009/10 Quarter One.
- Although there are significant gaps in benchmarking data. Where comparative data is available around half of the measures are above and half below comparator's published data. The majority of measures performing above comparators are within the Staying Safe Theme.
- Please note the numbers of indicators which can currently be quarterly reported are low, and less than at quarter one therefore percentage analysis by theme could be skewed.

Areas of Success

▪ **Being Healthy**

All three components have seen an improvement since Quarter One. These are 'Take up of free school meals in primary and secondary schools' (NI52a&b / No. 1a&b) and 'Percentage of schools achieving healthy schools status' (LAA BH5 / No.2) which requires four more schools to become accredited in order to reach the December 2009 LAA stretch target of 95%.

▪ **Staying Safe**

All but one of the Staying Safe indicators has shown improvement since Quarter One. The majority of indicators are on target and above Statistical Neighbours and National averages.

There has been continued significant improvement for three indicators in particular:

- Child Protection Plans Lasting over 2 Years (NI64 / No. 7) has reduced from a 2008/09 outturn of 4.8% to a Quarter Two position of 2.0%.
- Repeat Child Protection Plans (NI65 / No. 8) has reduced from a 2008/09 outturn of 10.6% to a Quarter Two position of 6.0%.
- Looked After Children Reviews (NI66 / No. 9) has improved from a 2008/09 outturn of 85.4% to a Quarter Two position of 95.8%.

▪ **Enjoying and Achieving**

Five of the six indicators in Enjoying and Achieving are currently on target and three have maintained top performance. The three currently at top performance are 'Number of Schools in Special measures' (NI89a / No.15a), 'Time taken for school to come out of an Ofsted Category of concern' (NI89b / No.15b), 'Statements of SEN issued within timescales Excluding Exceptions' (NI103a / No.16a).

▪ **Making a Positive Contribution**

The only indicator within Making a Positive Contribution is Prevalence of Chlamydia in under 24 year olds (NI113a / No.17a), which has improved since Quarter One.

▪ **Achieving Economic Wellbeing**

All Care Leavers are currently living in suitable accommodation (NI147 / No. 19).

▪ **Indicators Outside Of The Every Child Matters Framework**

There is only one indicator in this section, please refer to Areas of Under-performance for details.

Areas of Under-performance

▪ **Being Healthy**

'Take up of school lunches in secondary school (NI52b / No.1b) has seen an improvement in Quarter Two, however, this indicator is still currently off target.

▪ **Staying Safe**

Only 'Child Protection Reviews' (NI67 / No. 10) has seen a decline in Quarter Two which is due to one child's reviews and we expect a return to 100% in Quarter Three. The only other indicator posing some concern is 'Core Assessments completed in timescale' (NI60 / No. 4), which has improved slightly since Quarter One but is still underperforming at 63.7%, well below the 2008/09 outturn of 84.9%.

▪ **Enjoying and Achieving**

Secondary schools judged as having good or outstanding standards of behaviour, although recently improving, is currently at risk of not meeting it's year end target. This indicator relies on the school inspection cycle which is determined by Ofsted not the authority. Therefore if none of the four remaining schools outside this standard receive an inspection there will be no further improvement this year. The only indicator which has declined since Quarter One is 'Statements of

SEN issued within timescales Including Exceptions' (NI103b / No.16b), although this indicator is still 3% above target.

▪ **Making a Positive Contribution**

Whilst 'Screening Of Chlamydia' (NI113a / No.17a) has improved since Quarter One it is currently performing at 7.1% and below the target of 8.9%. The young offenders' indicators which would normally be within this section of the report were included in Quarter One but due to timing delays on release of data it is usually reported one quarter in arrears; an update will be included in the Quarter Three report.

▪ **Achieving Economic Wellbeing**

Currently only 54.5% of Care Leavers are in education, training or employment (NI148b / No. 20b); this equates to 5 out of 11 care leavers. The number of 16-18 year olds not in education, employment or training (NI117 / No.18) has also risen although this is in keeping with seasonal trends.

▪ **Indicators Outside Of The Every Child Matters Framework**

The percentage of migrants gaining an English language skills or knowledge qualification (NI13 / No.21) has a provisional outturn well below target although it has been identified that target setting was undertaken without a proper interpretation of the indicator's guidance. This can be supported by the actions taken by DCSF whereby submissions of the outturn figures have been delayed until January 2010 following clarification of their guidance. Please note that this is the first year for submission of this indicator and so it is difficult to make informed decisions about performance.

Performance Clinics

At every quarter all indicators which are both 'off target' and have a 'downward Direction of Travel' are considered for clinics. Performance Management Officers review the data, comments and any discussions with PI managers to make informed recommendations. These are then approved or otherwise by CYPS Cabinet Member & Advisers. The Cabinet Member for Children and Young People's Services can also call clinics on particular issues of interest which are not monitored by National Indicators eg Foster Carers. Adhoc Performance Clinics and Turning the Curve workshops have also been held on JLT request.

▪ **Previous Clinics**

During 2009/10 Quarter Two, one directorate performance clinic was held for the Percentage of 19 year old care leavers in education, training or employment (NI148 / No 20). The clinic identified that:

- due to the size of cohort within this indicator it would be necessary for future target setting to be related to the individual young people included each year, data is now available for all cohorts up to 2012 and target setting will be undertaken shortly.
- GCSE attainment of those within the cohort may give some indication of their likely position at 19, this analysis has been undertaken but has proved inconclusive.
- members of LSP should be approached to see if they could offer Introduction to Employment sessions looking at 30 day work placements.
- the Work Takeover Day on 6th November which invites a Young Person to shadow a worker for a day should be publicised.
- Post 16 Personal Education Plans should be implemented for care leavers.
- All schools currently have a named LAC Governor and LAC Teacher but the communications and awareness of their responsibilities regarding attainment and destination of LAC and Care Leavers needs to be reviewed.
- Best practice is shared with other authorities within Yorkshire and Humber but Wigan is our best performing statutory neighbour and should be contacted to see if their practice could be beneficial and implemented locally.
- An update to cabinet member on the actions and performance would be required for March 2010.

▪ **Update On Previous Clinic Recommendations**

In the 2009/10 Quarter One Report no performance clinics were recommended, however, it was expressed that a further review for these indicators would follow in the Quarter Two report.

No.	Ref.	Indicator	Clinic Recommended	Quarter Two Review/Rationale
1 b	NI 52 b	Take up of School Meals - Secondary	No 3rd Qtr Review	Small improvement since quarter one but still significantly below target. Clinic may be called at third quarter following collection of full term worth of data.
3	NI 59	Initial Assessments within timescales	No	Positive direction of travel, but still below target. However performance is now better than Statistical Neighbour and National Averages. Further improvements should be achieved through the Children's Services Improvement Action Plan
4	NI 60	Core Assessments within timescales	No	Positive direction of travel, but still below target. Further improvements should be achieved through the Children's Services Improvement Action Plan
5	NI 61	Timeliness of LAC placements following decision to Adopt	Yes	No update has been provided by the NI Manager. The 6 month review of March's clinic is now due for this indicator.
11	NI 68	% referrals to progressing to initial assessments	No	Performance is now on target and better than Statistical Neighbour and National Averages.
na	NI 45	Young Offenders EET	No 3rd Qtr Review	Data was not centrally release for Young Offenders in time for this report. Review to be taken forward to quarter 3 alongside the wider NI 117 - % NEET (see Future Clinic table below)
na	NI 112	Under 18 Conceptions	No Outturn Qtr Review	Following discussions with partners in health quarterly data is not at a sufficient quality for quarterly reporting. Further talks will be held to establish how to establish effective monitoring.
27 a	NI 113 a	Prevalence of Chlamydia - coverage	No 3rd Qtr Review	Improvement since quarter one but still below target. Clinic may be called at third quarter following collection of full term worth of data.
18	NI 117	% NEET	No 3rd Qtr Review	Please see table below regarding future clinics

▪ **Future Clinics**

Of the five indicators with a downward direction of travel four are also underperforming against targets. The following table summarises these and gives performance officer recommendations for future clinics with rationale.

No.	Ref.	Indicator	Clinic Recommended	Rationale
10	NI 67	Child Protection Plan reviews In timescale	No	One individual child's reviews resulted in the downturn in this indicator. The child in question is no longer subject to a Child Protection Plan and we would expect to see this indicator return to 100% in 2009/10 Quarter Three. The procedural reasons for the child's Child Protection Plan review being out of timescale have been identified and checks have now been put in place to ensure this does not recur.
18	NI 117	Percentage 16-18 year olds not in education,	No 3rd Qtr	Indicator target is set for year end position but current performance is following the same seasonal trends as

No.	Ref.	Indicator	Clinic Recommended	Rationale
		employment or training	Review	previous years. These seasonal trends would expect an improvement by 2009/10 Quarter Three so we would recommend that if no significant improvement is made by this point that a Performance Clinic is undertaken. We would also recommend setting of more reflective quarterly or monthly targets.
20	NI 148	Percentage 19 year old care leavers in education, training or employment	No	A performance clinic was held for this indicator in September 2009 (please see the previous clinics section) for this reason no clinic is recommended. It is worth noting that after 6 months, 5 out of 11 young people in this indicator's cohort have not been in education, training or employment and 9 out of the remaining 11 young people must be in education, training or employment in order for this indicator to reach its end of year target.
21	NI 13	Migrants' English language skills and knowledge	No	This is a baseline year for this indicator and the targets had been set without a thorough interpretation of the indicator's calculation. The year end for this indicator was 31 st August 2009, however, DCSF have now postponed the deadline for submission for all authorities pending clarification of the indicator's guidance.

CYPS Performance Monitoring Table – Quarter Two 2009/10

GLOSSARY

Detailed below is explanation regarding the different items within the following outturn performance table

No	Number on indicator as shown in this table. Added to aid discussion and referencing.	
Definition	The name of the indicator.	
Ref	the official reference number. 'NI' = National Indicator, 'BV' = Best Value performance indicator, LAA and LPI = Local stretch indicators within the 2006-09 Local Area Agreement	
Good Perf	The direction the performance needs to travel to improve	
08/09 Actual	Previous year's performance	
Q1 Perf	Level of achievement the service reached in quarter one	
Q2 Related Date	The end of the period that quarter two data relates to	
Q2 Target	Level of achievement the service wished to reach within quarter two (can be the same or an increment towards the year end target)	
Q2 Perf	Level of achievement the service reached in quarter two	
Q2 On Target	Has the target been achieved? ✓ = Yes, ✗ = No, n/a / - = no targets set so unable to assess	
Q2 DOT	Direction of travel of performance compared to previous quarter ↑ = better than last year or top performance, ↓ = worse than last year, → = same as last year, - / n/a = comparison can't be made	
Year To Date	Year To Date. Performance assessment by corporate monitoring system Performance Plus as at December 2008 ★ Green Star - Above Target or top performance, ● Amber Circle -On Target, ▲ Red triangle - Below target	
Latest Comparative Data (Q2 comparative position)	Stat. Neigh.	The latest average for our Statistical Neighbour group. Used by Ofsted to assess performance to be a good authority we need to have the majority inline or better than this average. The information in brackets assesses our performance against this average.
	National	The latest National average. Used by Ofsted to assess performance to be a good authority we need to have the majority inline or better than this average. The information in brackets assesses our performance against this average.
Comments	If necessary further explanation of performance is summarised here. Examples include details of external influences, seasonal trends or impact of action. This is supplied by indicator managers and approved by directors, additional notes from Performance and Data team may be added to the comments column to aid explanation.	
09/10 Target	The current year end targets set by indicator managers.	
10/11 Target		
11/12 Target		

Abbreviations within the table

NI	National Indicator	LPI	Local Performance Indicator	Comparative Data Position	
PI	Performance Indicator	LAC	Looked after Children	(Better)	Our current performance is better
BV	Best Value Performance Indicator	SEN	Special Educational Needs	(Inline)	Our current performance is broadly the
LAA	Local Area Agreement	PAF	Performance Assessment Framework	(Worse)	Our current performance is worse

CYPS Performance Monitoring Table – Quarter Two 2009/10

No	Definition	Ref	Good Perf	08/09 Actual	Q1 Perf	Q2 Related Date	Q2 Target	Q2 Perf	Q2 On Target	Q2 DOT	Year to Date	Latest Comparative Data (available from LAIT on 23/10/2009)		Comments	09/10 Target	10/11 Target	11/12 Target
												Stat. Neigh.	National				
BEING HEALTHY																	
1	Take up of school lunches	NI 52															
	Primary	a	HIGH	40.5%	41.1%	30 Sep 09	40.5%	41.2%	✓	↑	●	48.07% yr. 2009 (Worse)	41.30% yr. 2007 (Worse)	The Primary sector meals continue to increase compared to 2008-2009 exceeding the target figure. Secondary schools are reduced by comparison to 2008-2009 although take up is expected to be below target due to seasonal fluctuation. Absenteeism in July and September due to Swine Flu/viral illness has had an impact on the performance, however this cannot be accurately quantified.	40.5%	41.9%	42.3%
	Secondary [Ron Parry - RMBC]	b	HIGH	34.2%	30.2%		34.2%	30.8%	✗	↑	▲	44.75% yr. 2009 (Worse)	37.70% yr. 2007 (Worse)		34.2%	34.2%	34.5%
2	% schools achieving Healthy School Status in accordance with the 2005 NHSS criteria. LAA 2006-09 [Liz Galliver - RMBC]	LAA BH5	HIGH	84.5%	90.7%	30 Sep 09	93.0%	93.0%	✓	↑	●	-	-	There are currently four more schools which are ready to be accredited which will take the percentage over 95%	95.0%	-	-
STAYING SAFE																	
3	Percentage of initial assessments for children's social care carried out within 7 working days of referral [Pam Allen - RMBC]	NI 59	HIGH	77.8%	71.0%	30 Sep 09	80.0%	74.5%	✗	↑	▲	71.70% yr. 2009 (Better)	72.00% (2009) (Better)	Performance provided by Performance and Data Team, PI Manager has not provided commentary or completed the indicator monitoring form.	80.0%	81.0%	82.0%
4	Percentage of core assessments for children's social care that were carried out within 35 working days of their commencement [Pam Allen - RMBC]	NI 60	HIGH	84.9%	60.0%	30 Sep 09	86.5%	63.7%	✗	↑	▲	80.50% yr. 2009 (Worse)	78.00% yr. 2009 (Worse)	Performance provided by Performance and Data Team, PI Manager has not provided commentary or completed the indicator monitoring form.	86.5%	87.0%	87.5%
5	Timeliness of placements of looked after children for adoption following an agency decision that the child should be placed for adoption [Sue May - RMBC]	NI 61	HIGH	87.5%	25.0%	30 Sep 09	83.0%	-				77.79% yr. 2009 (-)	75.80% yr. 2009 (-)	Performance provided by Performance and Data Team, PI Manager has not provided figures, commentary or completed the indicator monitoring form.	83.0%	85.0%	86.0%
6	Stability of placements of looked after children: number of placements [Sue May - RMBC]	NI 62	LOW	13.3%	12.2%	30 Sep 09	11.0%	10.6%	✓	↑	★	10.79% yr. 2009 (Better)	10.70% yr. 2009 (Better)	Performance provided by Performance and Data Team, PI Manager has not provided commentary or completed the indicator monitoring form.	11.0%	10.5%	10.0%
7	Child protection plans lasting 2 years or more [Annie Redmond - RMBC]	NI 64	LOW	4.8%	3.8%	30 Sep 09	4.5%	2.0%	✓	↑	★	5.17% yr. 2009 (Better)	6.00% yr. 2009 (Better)	The progress in this area is being maintained.	4.5%	4.0%	3.5%
8	Percentage of children becoming the subject of a Child Protection Plan for a second or subsequent time [Annie Redmond - RMBC]	NI 65	LOW	10.6%	10.5%	30 Sep 09	11.0%	6.0%	✓	↑	★	11.70% yr. 2009 (Better)	13.00% yr. 2009 (Better)	Performance in this area is regularly reviewed to ensure compliance with regulatory requirements and Performance Indicator.	11.0%	11.0%	10.5%
9	Looked After Children cases which were reviewed within required timescales [Annie Redmond - RMBC]	NI 66	HIGH	85.4%	93.3%	30 Sep 09	92.0%	95.8%	✓	↑	★	92.42% yr. 2009 (Better)	90.90% yr. 2009 (Better)	Further improvements in performance have been made in the reporting period, sustaining the upward trend. Monitoring continues due to concerns about vulnerability of performance.	92.0%	93.0%	94.0%
10	Percentage of child protection cases which were reviewed within required timescales [Annie Redmond - RMBC]	NI 67	HIGH	100.0%	100.0%	30 Sep 09	100.0%	99.5%	✗	↓	▲	99.8% yr. 2009 (Worse)	99.0% yr. 2009 (Better)	This was one child who was made subject to a CP Plan at a CP Review Conference held to review the CP Plan of his siblings; this was procedurally incorrect but having been done he should then have been subject to a CP Review Conference at three months but this was not picked up by the system and was consequently out of timescale. However, no child should be made subject to a CP Plan at a CP Review Conference and checks have been put in place to ensure that such a procedural error does not recur.	100%	100%	100%
11	Percentage of referrals to children's social care going on to initial assessment [Pam Allen - RMBC]	NI 68	HIGH	57.60%	51.1%	30 Sep 09	55.0%	58.3%	✓	↑	★	69.10% yr. 2009 (Worse)	64.00% yr. 2009 (Worse)	Performance provided by Performance and Data Team, PI Manager has not provided commentary or completed the indicator monitoring form.	55.0%	57.0%	60.0%
12	Children who have run away from home/care overnight [Morri McDermott - RMBC]	NI 71	HIGH	14	14	1 Oct 09	-	-				8.80 yr. 2009 (-)	8.70 yr. 2009 (-)	Performance provided by Performance and Data Team, PI Manager has not provided figures, commentary or completed the indicator monitoring form.	15	15	-
ENJOYING AND ACHIEVING																	
13	Number of Extended Schools [Helen Shaw - RMBC]	NI 88	HIGH	60%	85%	30 Sep 09	85%	89%	✓	↑	★	-	-	There appears to be some discrepancies within the TDA database. Which they are investigating. The figures for each strand of the core offer are higher than the overall figure. It is expected that the 2009/10 target will be revised upwards again at the meeting with the TDA in November 2009. Performance provided by Performance and Data Team, PI Manager has not provided commentary or completed the indicator monitoring form.	85%	100%	100%
14	Secondary schools judged as having good or outstanding standards of behaviour [Katy Edmondson - RMBC]	NI 86	HIGH	69%	75%	31 Jul 09	80%	75%	✗	→	▲	67.67% yr. 2008 (Better)	76.10% yr. 2008 (Worse)	No schools have been inspected since January 09 so the measure remains the same	85%	90%	100%
15	Reduction of number of schools judged as requiring special measures and improvement in time taken to come out of the category	NI 89															
	Number	a	LOW	0	0	31 Jul 09	0	0	✓	↑	★	-	-	There has been no school in Special measures since December 2006. This is a major area of success for the LA and schools	0	0	0
	Time	b	LOW	0	0		0	0	✓	↑	★	-	-	Performance provided by Performance and Data Team, PI Manager has not provided figures, commentary or completed the indicator monitoring form.	0	0	0
16	Special Educational Needs – statements issued within 26 weeks	NI 103															
	Excluding exceptions	a	HIGH	100%	100.00%	30 Sep 09	95.0%	100.00%	✓	↑	★	-	-	103a) Of the 29 total number of statements issued this quarter, if we exclude exceptions, 4 were issued all within 26 weeks.	95.0%	95%	95%
	Including exceptions [Helen Barre - RMBC]	b	HIGH	95.90%	100.0%		90.0%	93.1%	✓	↓	★	-	-	103b) Of the 29 total number of statements issued this quarter 27 were issued within 26 weeks. Both statements not issued within the timescale were due to a change in parental preference made after the 15 day deadline. Cumulative performance remains on target, although our current risk assessment is that future targets are under significant pressure due to the long term absence of a key member of the case work team and the re organisation of the service w/e from Sept 2009.	90.0%	92%	94%

CYPS Performance Monitoring Table – Quarter Two 2009/10

												Latest Comparative Data (available from LAIT on 23/10/2009)					
No	Definition	Ref	Good Perf	08/09 Actual	Q1 Perf	Q2 Related Date	Q2 Target	Q2 Perf	Q2 On Target	Q2 DOT	Year to Date	Stat. Neigh.	National	Comments	09/10 Target	10/11 Target	11/12 Target
MAKING A POSITIVE CONTRIBUTION																	
17	Prevalence of Chlamydia in under 24 year olds Coverage	NI 113 a	HIGH	19.7%	4.3%	31 Aug 09	8.9%	7.1%	x	↑	▲	-	-	% of Positive Chlamydia Tests Not yet confirmed	25.0%	35.0%	-
	Prevalence (Melanie Simmons - NHS Rotherham)	b	LOW	8.9%	-		-	-				-	-		-	-	-
ACHIEVING ECONOMIC WELLBEING																	
18	16 to 18 year olds who are not in education, training or employment (NEET) (Karen Borthwick - RMBC)	NI 117	LOW	6.9%	8.1%	31 Aug 09	8.0%	9.4%	x	↓	▲	8.56% yr. 2008 (Worse)	6.70% yr. 2008 (Worse)	Data evidences a continued rising trend in numbers of NEET young people due to the economic downturn. August 2009 NEET stood at 9.9%(790 young people) representing a 7.3% rise on the position in August 2008 NEET of 9.2% (.723 young people) . Three month rolling average validated figures for June to August 2009 were 9.4% NEET representing an 8% rise on the position (8.7%) over the same period last year. As of August 2009 the number of young people in employment has reduced by 36% (1199 young people) in comparison to the same position last year (1870 in employment) with a reciprocal reduction in apprenticeships vacancies from 527 to 446 (15%reduction) in apprenticeships. We are still optimistic regarding achieving the revised NEET target out turn for November to January as RMBC NEET response fund continues to create increased capacity for learning opportunities for NEET young people.	8.0%	7.10%	-
19	Care leavers in suitable accommodation (Sue May - RMBC)	NI 147	HIGH	94.7%	100.0%	30 Sep 09	95.0%	100.0%	✓	↑	★	89.29% yr. 2009 (Better)	89.60% yr. 2009 (Better)	<<Performance and Data Notes>> Data has been provided by Action For Children. PI Manager has not provided commentary or completed the indicator monitoring form.	95.0%	92%	-
20	Care leavers in employment, education or training (Sue May - RMBC)	NI 148	HIGH	55.3%	75.0%	30 Sep 09	65.0%	54.5%	x	↓	▲	58.15% yr. 2009 (Worse)	63.00% yr. 2009 (Worse)	<<Performance and Data Notes>> Data has been provided by Action For Children. PI Manager has not provided commentary or completed the indicator monitoring form.	65.0%	70%	-
INDICATORS OUTSIDE OF ECM OUTCOMES FRAMEWORK																	
21	Migrants' English language skills and knowledge (Helen Shaw - RMBC)	NI 13	HIGH	18%		30 Sep 09	70%	13%	x	↓	▲	-	-	The denominator reflects ACL funded provision, the majority of which was aimed at giving basic ESOL language support through various partners, but who were not expected to set accreditation targets through this funding. The only provision offering accreditation outputs was RMBC, Community Learning provision. Targets set – 50 / achievement - 46 <<Performance and Data Team>> This is a provisional outturn figure	70%	25%	25%